

CYBORD KINGFISHER

Reel Incoming Inspection: Purchasing Reels Securely From Any Source

With the growth of the electronic assembly market and increased purchasing of components from the open market, the demand for better verification solutions is rising. Current reel quality standards rely on statistical checks (samples). With analysis of 100% of the components, Cybord Kingfisher detects mixed lot codes, date codes, homogeneity of the reel, and authenticity of each component.

Cybord's Kingfisher solution offers analytics of 100% of the components using Components' Visual Inspection based on the latest proprietary visual AI algorithms and Big-Data analysis.



The Cybord AI engine processes the images of all components without removing them from the reel to verify authenticity, decode and validate all top markings, date-codes, and lot- codes.



MARKING 100% Material Verification

Increase confidence in purchasing materials from the open market. Identity and decode mixed, unregistered lots- and date codes.



HOMOGENEITY Verify Geometrical Shapes

Verify that all components have an identical geometrical shape to ensure components are produced at the same factory, production line and date.

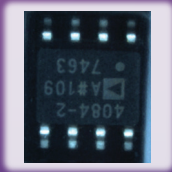


AUTHENTICITY Avoid Counterfeit Reels

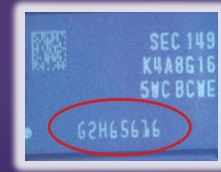
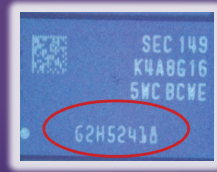
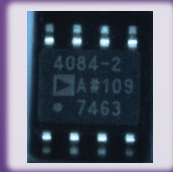
Identify the manufacturer source of each component based on AI modules and big data.

THE CYBORD AI ENGINE PROCESSES THE IMAGES OF ALL COMPONENTS ON THE REELS TO ENSURE THEIR SOURCE AND RELIABILITY

Examples images of damaged components:



Flipped Component Detected



Mixed Lot-Code Reel Detected

BENEFITS



Analyze All Components

Increase the confidence of your customers by supplying only verified components.



Work With Any Broker/Source

Analyze 100% of the delivered components and convert unavailable sources to available ones.



Share Results

The lab is able to share online results with customers through the Cybord portal.



Transcode Date-Codes

By using Natural Language Processing the platform translates binary marks into date codes.



Same-Day Results

Kingfisher scans up to 20,000 components/hour (4-5 reels), while producing a real-time report.



Dimension Measurements

Provide full dimension of each component based on image analysis.